



Quick Guide

Table of Contents

Introduction to PluginMaster.	2
Plug-ins Basic.	3
How To Use It?.	5
Group Mode.	5
Custom List Mode.	8
Preview Mode.	9
Filtering.	10
Filter Builder Dialog.	16
Saving to/Loading from an External File.	22

PluginMaster,LLC
501 Silverside Road, Suite 105
Wilmington, DE 19809
USA
www.pluginmaster.com

Introduction to PluginMaster

Today exists thousands of Photoshop compatible plug-ins developed by a few hundred people and companies all over the world. They supply additional image effects or perform special tasks that are impossible or difficult to achieve with the means of an image application alone. Most graphics applications (but not only graphics applications, also vector, 3D, animation, etc. applications) let you execute and apply plug-ins like plug-in hosts.

In any case, today most people only keep or continually use a small percentage of the offered plug-ins. Why so, if we know how that one single click with one plug-in can save a lot of time in image enhancement? A list of reasons can be long, but in our opinion there are two main reasons:

1. With hundreds or even thousands of plug-ins installed, nobody can remember what effect is produced by which plug-in (most of them).

2. With hundreds of plug-ins installed in the filter menu, most graphics applications get quite crowded and some applications don't even display all plug-ins anymore. And with thousands of installed plug-ins no host can be loaded.

For these reasons, you can find today several applications or tools which allow you to resolve these problems, but people still use just few plug-ins (especially PRO users). Why? Because any of these solutions let you **manage and execute desired plug-ins in real-time**.

PluginMaster is first and unique solution which let you do it!

With PluginMaster you can:

- **Manage** all your plug-ins in 100% customized way.
- **Create your own** 100% customized dynamic **plug-in menu**.
- **Work** with **unlimited number** of plug-ins from your favorite application in **real-time** without loading them.
- **Find and execute** exactly which plug-in you need in a second.
- And much more...

PluginMaster is first at all Photoshop compatible plug-in, but PluginMaster is even an easy to use powerful standalone image editor. With PluginMaster, you can create, modify and enhance images.

Use PluginMaster to:

- **Save** images to any of 15 image formats.
- **Process** images for color correction and enhancement.
- **Print** images using an interactive visual print layout system.

PluginMaster is ideal for users interested in image processing, digital painting, photo enhancement and color enhancement.

PluginMaster is very helpful when dealing with different file formats as it can open and save the most popular formats, and it has the ability to convert them in batches from one format to another.

Corrupted images can be automatically enhanced using the wide variety of functions included in PluginMaster.

Working with colors is easily done as PluginMaster supports HSB, CMY, CMYK, LAB, RGB, and HLS color spaces.

The size and position for printing an image can be customized using PluginMaster.

All these and more can be made easily through this intuitive and flexible working environment.

Plug-ins Basic

1. Plug-ins installation

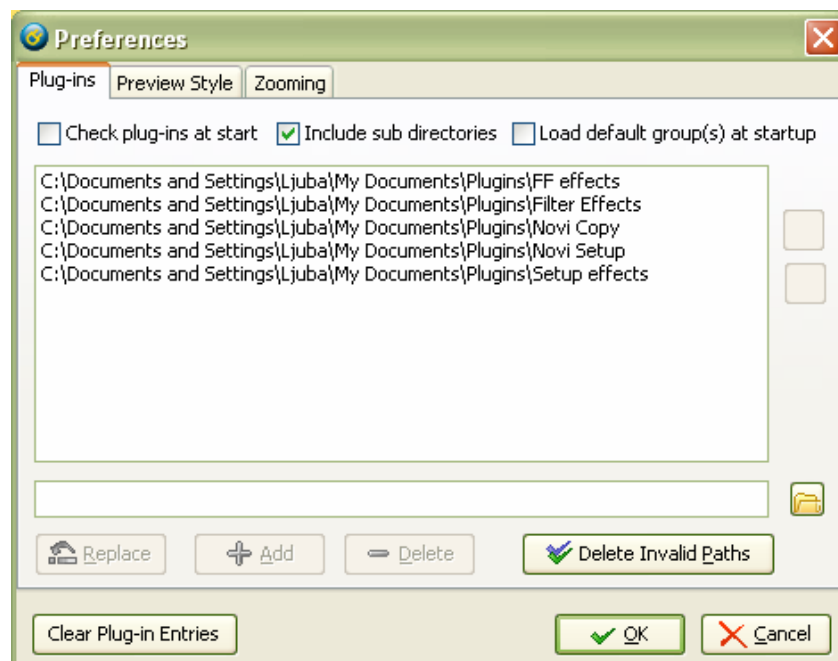
PluginMaster gives you absolute freedom about where you can install your plug-ins. To have a good overview and better possibilities to manage and work with them in 100% customizable way with less possible losses of data, what you can create, we recommend you:

- To create a folder called "Plug-ins" at the root of your hard drive (or in My Documents folder), e.g. at C:\Plugins\. It is also recommended to use a sub folder for each plug-in manufacturer, plug-in collection or plug-in product, otherwise you will have problems if you want to delete or remove a certain plug-in and its additional files later (as we said, you can lose data which you have created for more than one plug-in).

2. Plug-ins detection

Choose Preferences from the File menu (available from PluginMaster Window either from Plugin Manager Window), switch to Plug-ins tab view, select the folder and add it to selected folders (repeat it until you add all folders). You can see in Plug-ins tab view three check options (just one is checked like default by installation). For best performance, we recommend you to leave it like this .

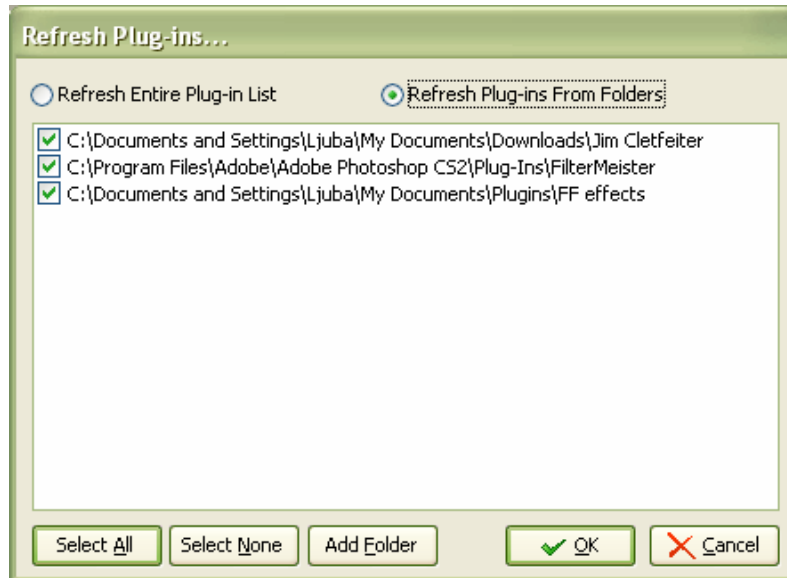
- Check plug-ins at start – means that PluginMaster will check all plug-ins on every startup. It will reduce the speed of startup (leave unchecked – recommended).
- Include sub directories – means that all subfolders in selected folder will be checked for plug-ins (leave checked – recommended).
- Load groups at startup – means that PluginMaster will load main menu with default groups at startup (leave unchecked – recommended). This option will be explained later.



3. Refresh plug-ins

Choose Refresh Plug-ins from the Plug-ins menu in the Plugin Manager Window. Refresh Plug-ins dialog will appear. This dialog enables you to refresh your plug-in list whenever you install some new plug-in(s). You can do it in two ways:

- You can refresh entire plug-in list (not recommended, can take a lot of time).
- You can refresh just a particular folder(s). You can even add a new folder instead to do it in Preferences dialog.



How To Use It?

PluginMaster gives you an opportunity to use your plug-ins in three modes:

1. Group mode
2. Custom List mode
3. Preview mode

Group mode

In most common cases users work without plug-in(s) or with a little number of them. Group mode enables you to extend this way of work with much more plug-ins in disposition, with much more customization and with extremely less time of execution. This short Group mode tutorial will show you how to do it. This tutorial will be much more familiar to you for we will show you how to use it in the way you used it up to now (**Remember, PluginMaster can use unlimited number of plug-ins in real-time!**).

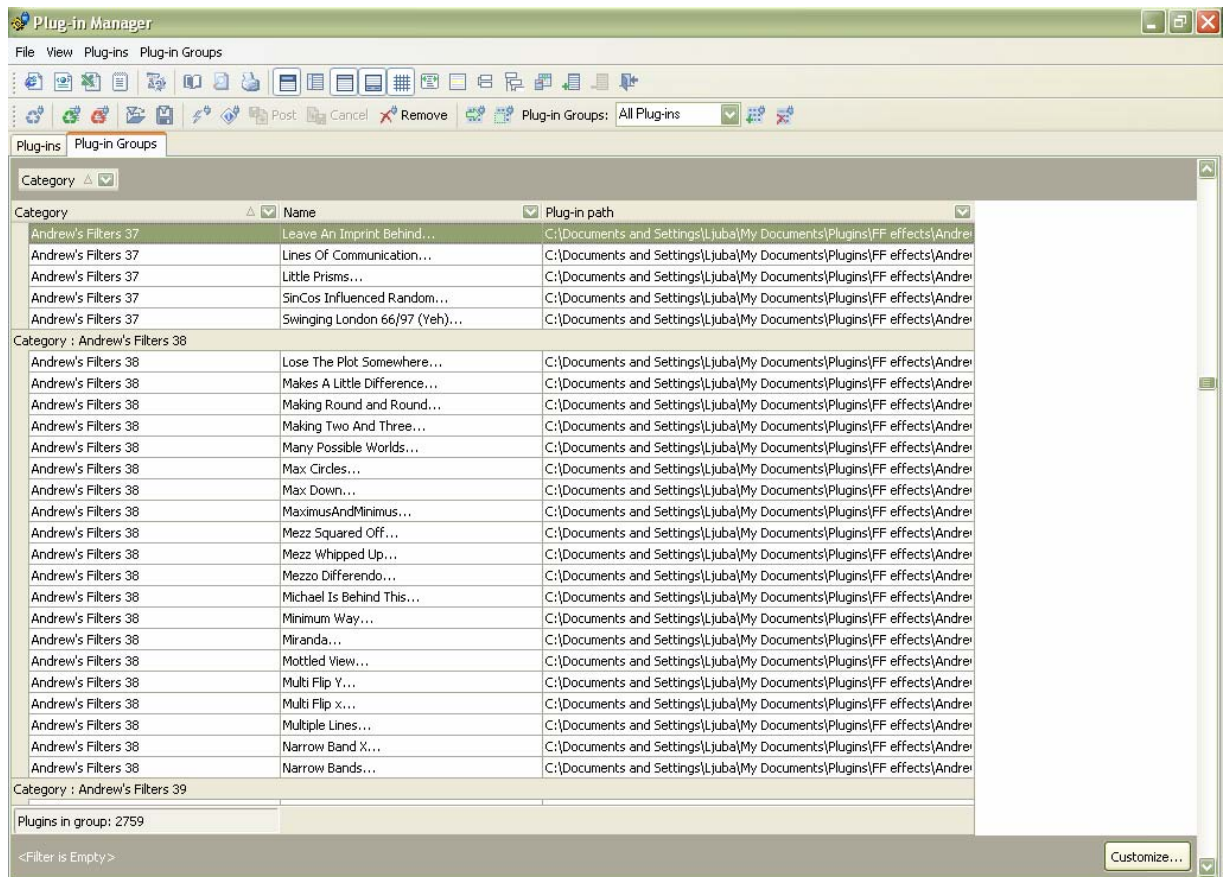
1. Group creation

Open the Plugin Manager and choose the New Group from Plug-in Groups Menu. Create New Plug-in Group dialog will appear. Enter the name of the new group (for this purpose we will enter 'All Plug-ins') and press OK. New group ('All Plug-ins') will appear in the Toolbar combo box.



2. Plug-in(s) selection

Choose the plug-in(s) which you want to use (for this purpose we will select all installed and detected plug-ins). You can do it in the Plug-in Manager in the Plug-ins tab view. Leave all plug-ins in the tab view (without filtering) and choose the Add To Group (Add Selection To Group will add only selected plug-in) from Plug-in Groups Menu. All filtered plug-in(s) (in this case all plug-ins) will appear in Plug-in Groups tab view under the 'All Plug-ins'.



NOTE: One plug-in can be member of more than one group!

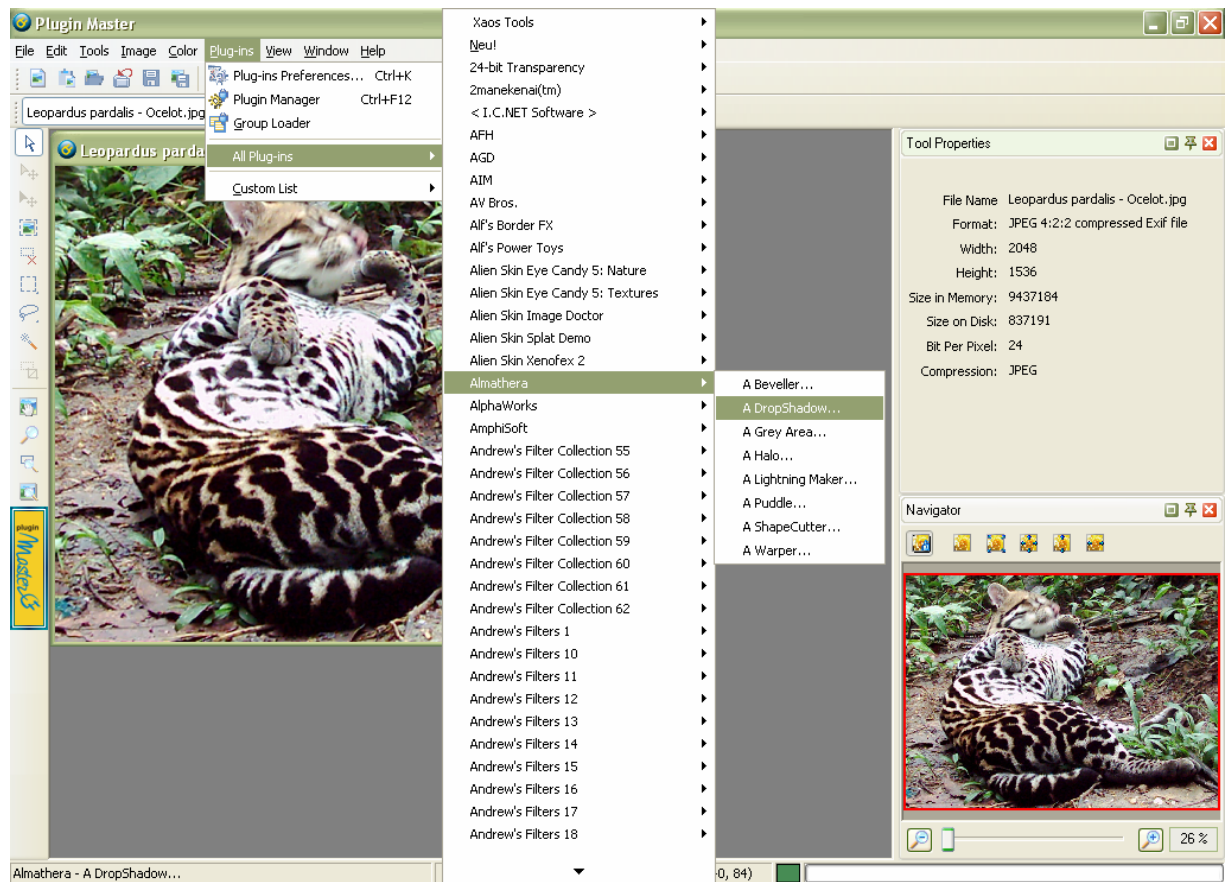
WARNING: If you have too much plug-ins in the group, you may see warning system dialog 'Out of memory' (in fact 'Out of resources'), but this dialog appears regarding the Windows OS limitation, not regarding the PluginMaster. This error means that you have too much items in the menu (sub menu) and Windows resource is not capable for filling it (so, some of the plug-ins may be unloaded). For this reason we do not recommend creating 'All Plug-ins Group' if you have huge number of plug-ins. It is allways better to split them up.

3. Group Loader

New created group can be used in real-time work. Choose the Group Loader in the PluginMaster Window from the Plug-ins Menu. You will see in the Controls Panel 'All Plug-ins' group. You can use this group in various ways:

- Check the 'All Plug-ins' and press Load. A new sub menu 'All Plug-ins' with all plug-ins will appear in the Plug-ins Menu.
- Check the 'All Plug-ins' and press Make Default and '(default)' will appear in the Controls Panel by the 'All Plug-ins'. You can press Load Default and the new sub menu 'All Plug-ins' with all plug-ins will appear in the Plug-ins Menu. This is useful in the case when you have more groups assigned like default groups.
- Check the 'All Plug-ins' and press Make Default and '(default)' will appear in the Controls Panel by the 'All Plug-ins'. Open the Preferences dialog and check the Load groups at startup. The new sub menu 'All Plug-ins' with all plug-ins will appear in the Plug-ins Menu whenever PluginMaster is started. This is not recommended if you work with a huge number of plug-ins (depending on your PC performances and on the plug-ins number it can take the

time to load PluginMaster). In any case, you can test this option to see how PluginMaster will be loaded with huge number of plug-ins much faster than many graphics application without any plug-in (we have tested this option with 4.000. plug-ins).



Custom List mode

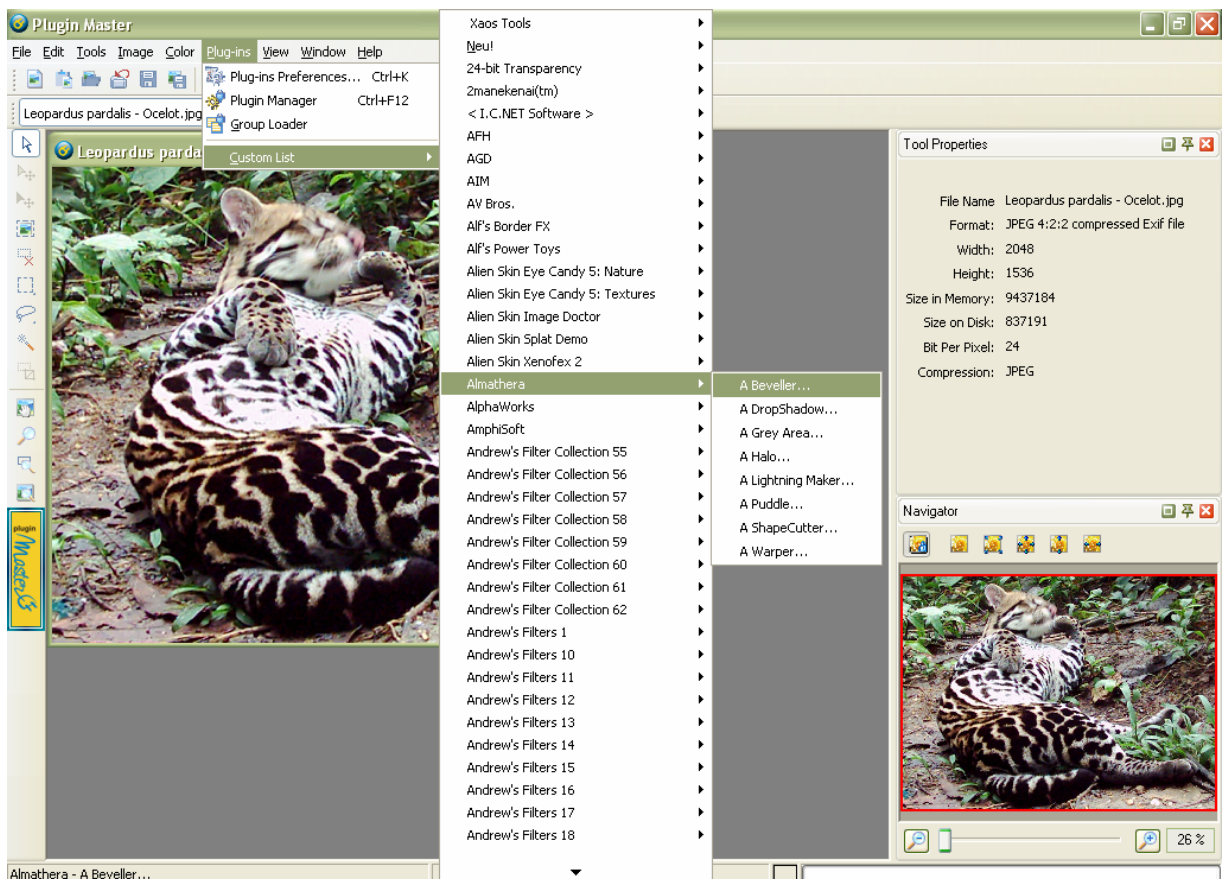
What makes Custom List Mode attractive? It's the fact that Custom List Mode enables you to use the desired plug-ins (not the ones you usually use) occasionally in a second exactly at the moment you need them. Let's see how to do it:

1. Filtering

Plugin Manager let you find quickly and with little effort, the plug-in(s) you need at the right moment you need them. You can do it filtering your existing plug-ins. For details see Filtering.

2. Loading Custom List

For this tutorial purpose we suppose that you have already filtered some plug-in(s). Now you just need to press Load Custom List from Plugin Manager Plug-ins Menu to get into PluginMaster Window. Filtered plug-in(s) list will appear in the Plug-ins Menu Custom List sub menu.

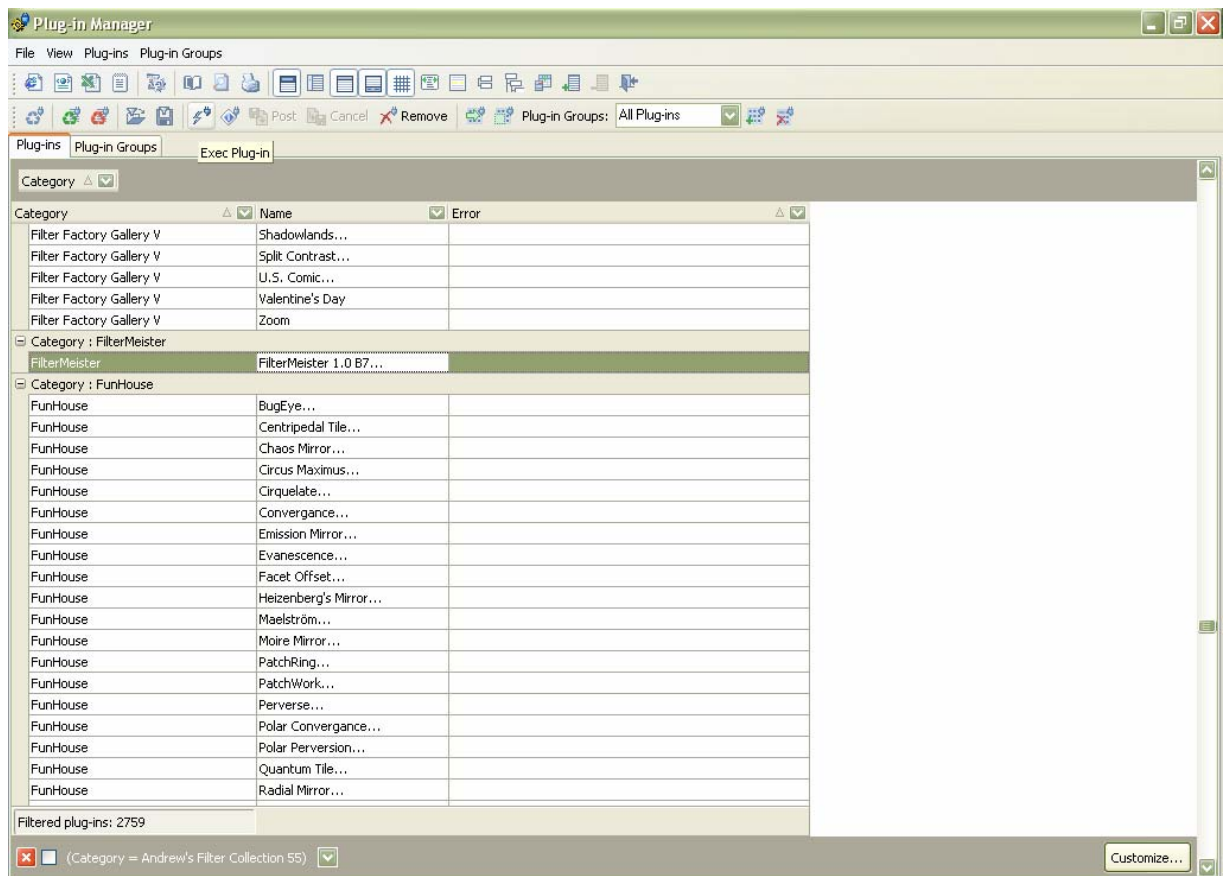


NOTE:

- Custom List persists just in the current working session.
- You can unload the current Custom List and Load the other Custom List if you need.
- You can save Custom List:
 - a) like Group (if you have reason to do it) or
 - b) like Filter record (you can do it in the Plugin Manager with Save Filter option). You can organize your saved filter list in hierarchically folders. You can reload saved filters any time with Open Filter option.

Preview mode

Preview mode plug-in execution is ideal for plug-in management. When you organize your plug-ins in Plugin Manager Window, you will probably need to preview which effect(s) can be done with selected plug-in to describe it in your new created attributes (usage, effect type, price, purchase date, plug-in screenshot, rich text description, etc.). **Remember – more attributes you create and more details you enter, less time you will need to find that what you need in your real-time work.** You can preview your plug-in easy in Plugin Manager by choosig Exec Plug-in in Plug-ins Menu. **NOTE that you need to have opened image in PluginMaster Window.**



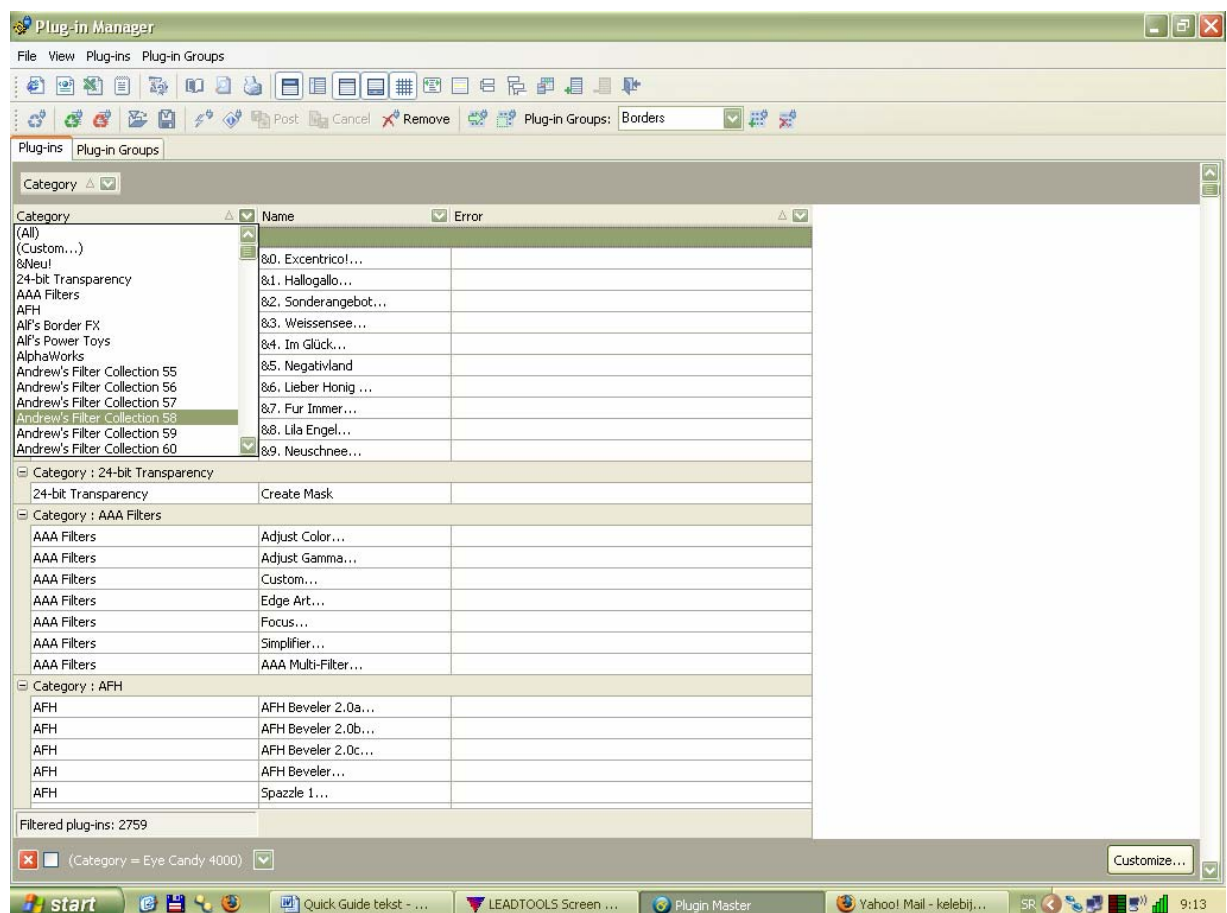
Filtering

Plugin Manager enables you to filter plug-ins in three ways:

- Filter Dropdown List
- Custom Filter Dialog
- Filter Builder Dialog

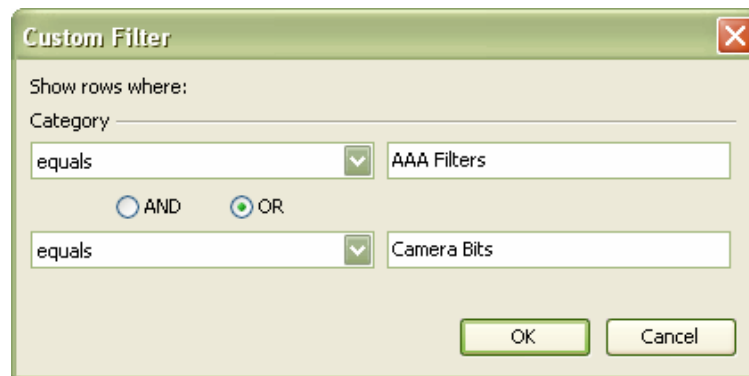
Filter Dropdown List

By default, every column in a grid table view and banded table view displays the filter dropdown arrow within the column header panel. When filtering is set by a column, its filter arrow is displayed in blue. Clicking this arrow displays a dropdown list with the column's unique values. This list is populated with values obtained from the current column. In large datasets, this operation may consume a lot of time since all records are accessed. The (All) and (Custom...) items are always added to the list. Selecting the (All) item removes all the filter conditions set for the current column. The (Custom...) item invokes the Custom Filter or Filter Builder Dialog which allow you to visually construct the filter criteria for the given column or current view, respectively. (Blanks) and (NonBlanks) elements are added automatically. When you select a value from the list (any item other than All, Custom, Blanks or NonBlanks), a new filter condition is created and applied to the data in the current view. When filtering is applied, the filter panel appears with a description of the filter criteria.



Custom Filter Dialog

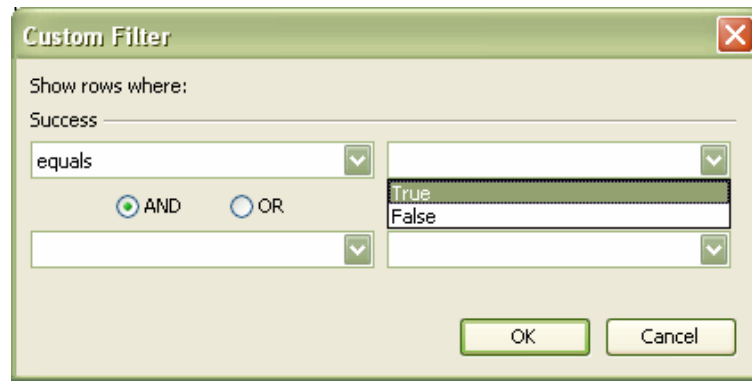
Selecting the (Custom) item from the filter dropdown list activates the Custom Filter dialog. This dialog allows you to specify the filter criteria for a single column consisting of one or two filter conditions. You can also specify the operator for these conditions.



The following image shows all the possible operators:

Operator	Text representation
=	equals
<>	does not equal
<	is less than
<=	is less than or equal to
>	is greater than
>=	is greater than or equal to
LIKE	like
NOT LIKE	not like
= NULL	is blank
<> NULL	is not blank

In addition to the operator, values must be specified via the value box. This uses the same editor type as the column (stand-alone and in-place use the same editor classes).



When using the LIKE or NOT LIKE operator, you can use the 'underscore'(_) and 'percent' (%) characters to substitute one or several symbols in a string value respectively. The second filter condition is specified in the same manner. To combine two conditions, use the AND/OR check box.

Filter Builder Dialog

In some cases, however, filter conditions cannot be displayed with the help of the Custom Filter dialog. For instance, the Custom Filter dialog supports only one or two filter conditions for a single column. The dialog also does not support some filter operators (BETWEEN, membership test operator and date/time related operators). So if the filter criteria contains more than two conditions bound to a single column or if non-supportable operators are used, the Filter Builder Dialog is activated instead when selecting the (Custom) option from the filter dropdown list.



The filter criteria specified by this dialog is interpreted as:

(Category=AAA Filters OR Category =Camera Bits) AND Category =KPT effects

The Filter Builder dialog extends the functionality of the Custom Filter dialog. Unlike the Custom Filter, the Filter Builder Dialog allows you to specify the filter criteria for any column in the view. A user can also invoke the dialog by clicking the Customize button in the filter panel.

The Filter Builder dialog supports all possible operators. In addition to those described in the above table, you can create filter conditions using the BETWEEN, membership test operators and date/time related operators:

Operator	Description
----------	-------------

BETWEEN	
---------	--

The operator allows you to select records whose column values are included between two operands. To specify the range, use the editors which appear when clicking the operand boxes. The operator displayed in the picture above is equivalent to the following statement: $ID \geq 1 \text{ AND } ID \leq 100$

NOT BETWEEN	
-------------	--

The NOT BETWEEN operator selects records whose column values are not included in the required range. Operands are specified in the same manner as for the BETWEEN operator. The equivalent of the operator displayed in the image is: $ID < 1 \text{ AND } ID > 100$

IN	
----	--

Implements a membership test operator. The IN operator selects records with column values equal to operands from the specified set. To add an operand to the set, click the '+' button. The equivalent to the IN operator shown in the image above is: $ID = 1 \text{ OR } ID = 4 \text{ OR } ID = 7$

NOT IN	
--------	---

The negation of the IN operator. It selects a record if its column value is not a member of a specified set. The equivalent to the IN operator shown in the image above is: $ID \neq 1 \text{ AND } ID \neq 4 \text{ AND } ID \neq 7$

Date/time operators:

is yesterday	
--------------	---

is today

is tomorrow

is last week

is last month

is last year

is this week

is this month

is this year

is next week

is next month

is next year

This group of operators is available only for date/time fields. They do not require any operands. For instance, the is today operator selects records with column values equal to the current day. The is this year operator selects records equal to the current year etc.

The Filter Builder dialog also supports two more Boolean operators to combine conditions in the list: NOT AND and NOT OR.

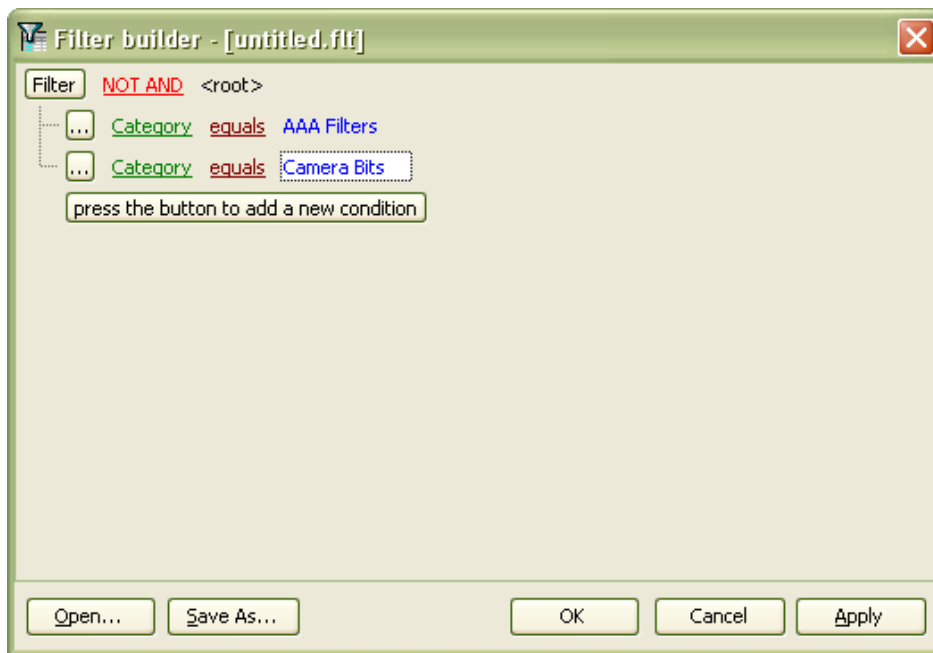
NOT AND combines conditions by the AND operator and then negates the result:



These criteria select all records except those with the Name column value set to 'Focus...' and Category set to AAA Filters. The equivalent text representation is:

NOT (Name='Focus...' AND Category=AAA Filters)

NOT OR combines conditions by the OR operator and then negates the result:



The criteria selects records which don't have their Category set to AAA Filters or Camera Bits. The text representation is:

NOT (Category=AAA Filters OR Category=Camera Bits)

For more details see Filter Builder Dialog.

Filter Builder Dialog

One of the end user capabilities for filtering data displayed within a grid view is to use the Filter Builder dialog. This dialog allows end users to build complex filter criteria with an unlimited number of filter conditions combined by logical operators.

End users can invoke the Filter Builder dialog using the Customize... button displayed within the filter panel. This dialog is also invoked when choosing the (Custom...) item from the filter dropdown, provided that the Custom Filter dialog cannot display the filter condition applied to the corresponding column.

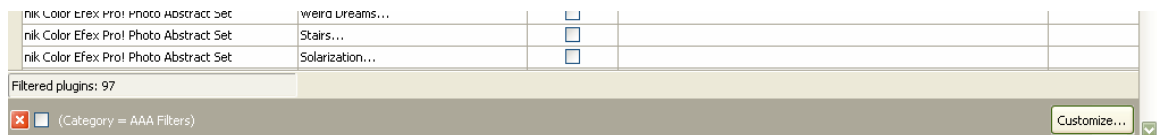
PluginMaster provides a Filter Builder dialog to facilitate creating and applying filter criteria at runtime. The Filter Builder dialog supports many filter operators. In addition, it allows you to save filter criteria to an external file for future use.

This section also relates to how you can use the dialog to construct custom filter criteria. You can do it in two ways:

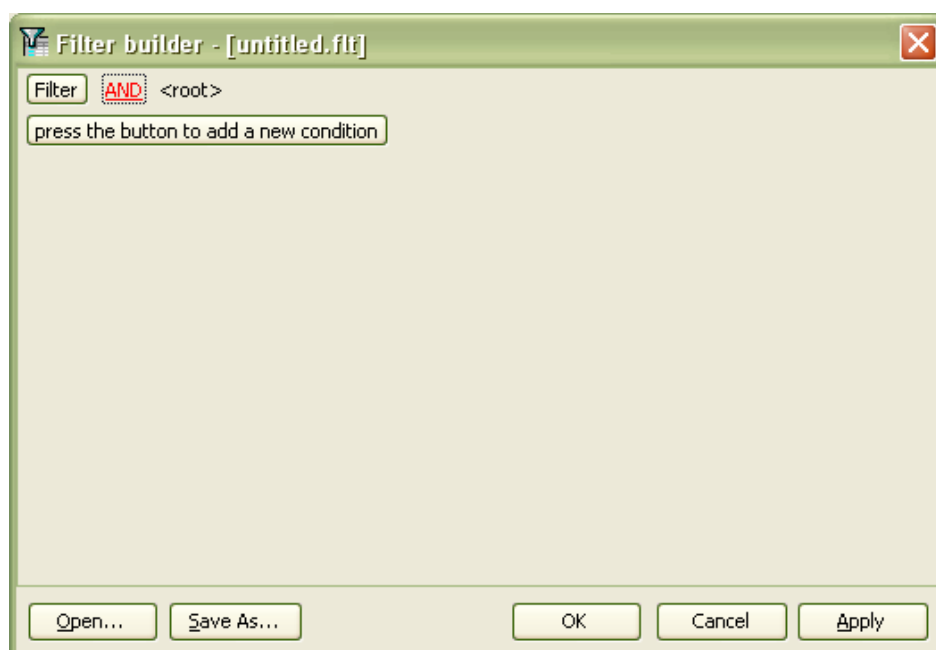
1. Building filter criteria
2. Saving to/loading from an external file

Building Filter Criteria

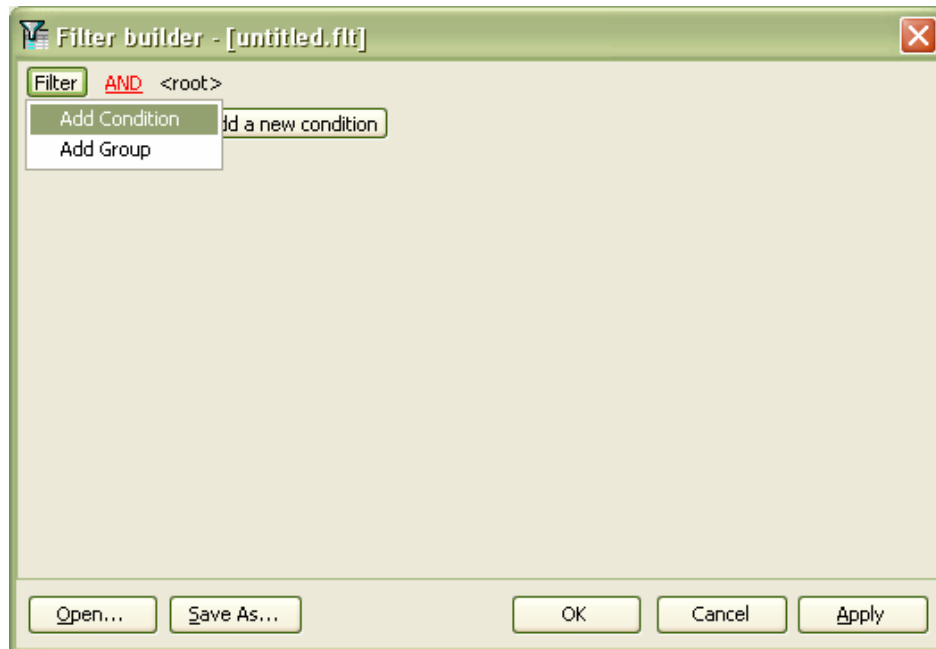
To invoke the Filter Builder dialog, click the Customize button on the Filter panel.



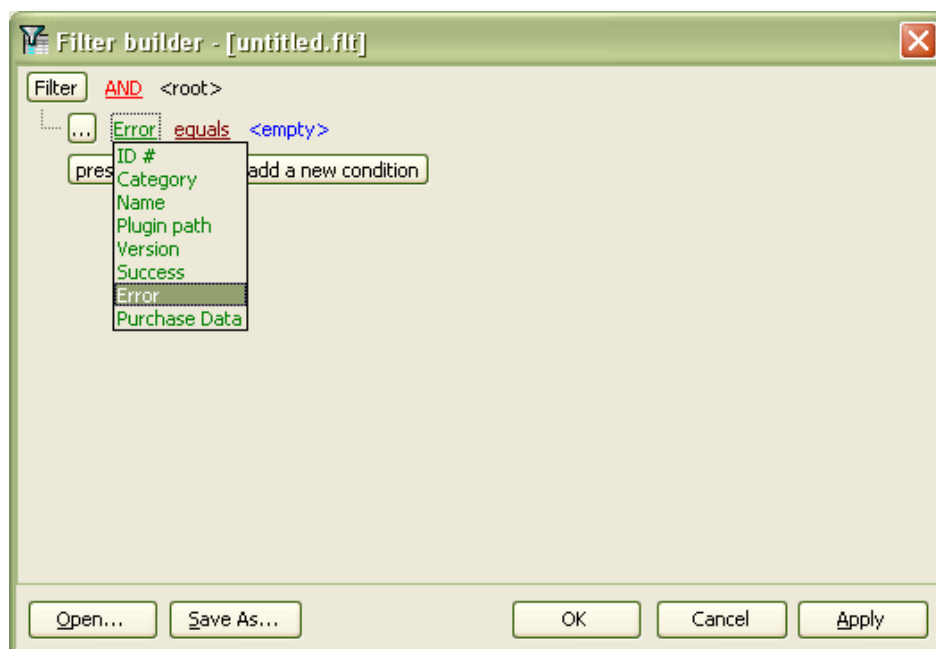
The following image displays an empty Filter Builder dialog:



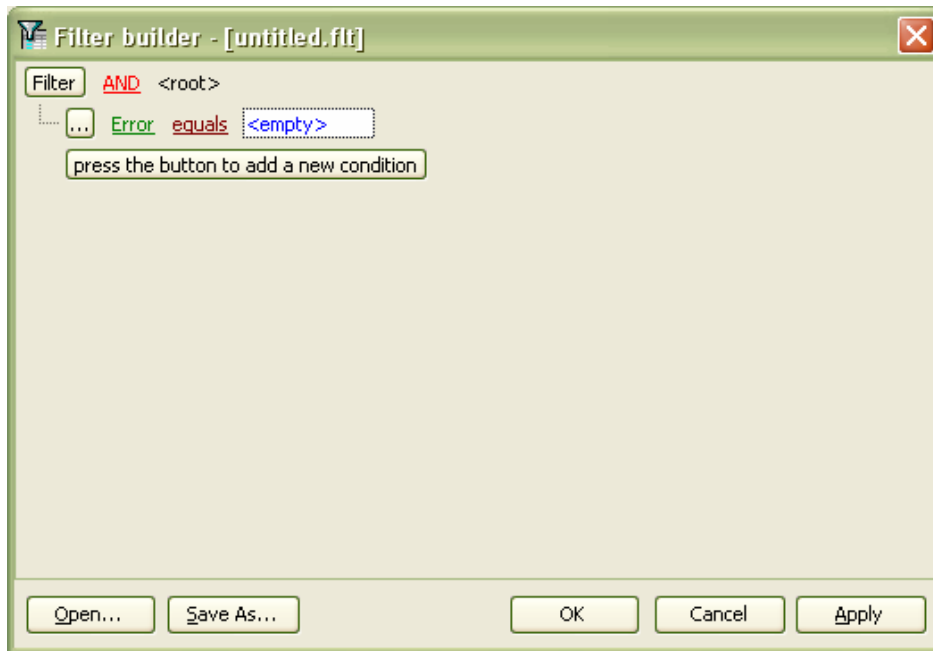
Suppose we need to select the plug-ins which have some problems (errors) when we want to launch them in PluginMaster, for simple reasons – to remove them, but we want to extract just plug-ins with Bad result type of errors. These criteria are applied to the Error column (you should to create this column, if you want to make this filtration). Click the 'press button to add new condition' box. This will add a new condition to the criteria. Alternatively, you can left-click on the Filter box and select the Add Condition option from the dropdown menu:



As we need to apply the filter criteria to the Error column, left-click the column box (next to the ellipsis button) to open the dropdown list displaying the available column names. Then select the Error item:



In the operator box, select the EQUALS item. This will add empty value box to specify the inclusive value for the EQUALS condition:



Next, you need to specify the value for the EQUALS operator. You can do this either manually by typing a date using the keyboard or via the date editor that is activated when you click the value box and open the dropdown. The editor used in value boxes is determined by the editor type assigned to the corresponding column (in other words, not allways available):



Now you can apply this filter condition to the view by clicking the Apply button.

In a similar manner, we will add another filter condition to show only the orders with their Category set to Cybia.

Click the 'press button to add new condition' box. This adds a new filter condition at the same level as the condition for the Error column. In the column box, select the Category item. Then move to the value box and type the Cybia.



To select plug-ins by particular name, we need to add a new filter condition. Suppose that we want to select plug-ins by three names.

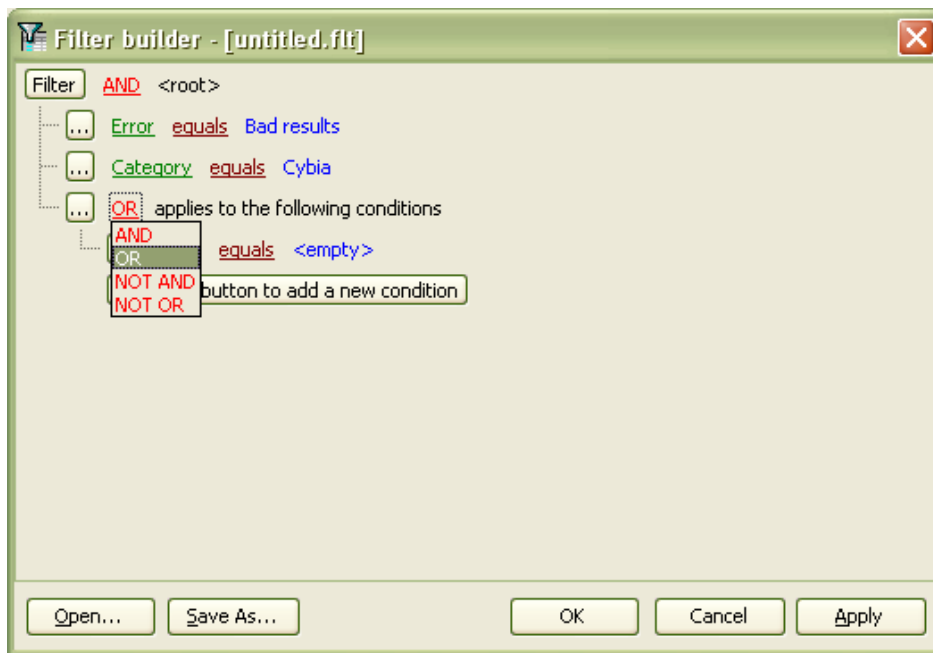
Name = 'AlphaWorks' OR Name = 'ColourWorks' OR Name = 'EdgeWorks'

This is a complex filter condition combining three simple conditions with the OR operator. So we cannot just add them at the same root level as for the existing conditions which are combined by an AND operator. Instead, we need to add a group of conditions.

Left-click the ellipsis button for the Name condition and select the Add Group menu item:





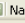



Our new complex criteria must combine conditions using the OR operator. To do this, left-click the operator box (by default, it specifies the AND operator) and select the OR item from the dropdown:





The group already contains one condition. You have to add two more conditions at the same level and specify the required customers using value boxes. After doing this, the Filter Builder dialog will look like:




Finally, click the OK button to apply the filter criteria and close the dialog. The grid view now displays only the records matching the set criteria.

Category 				
Category 	Name 	Success 	Error 	Purchase De 
Category : Cybia				
Cybia	EdgeWorks...	<input type="checkbox"/>	Bad results	
Cybia	ColourWorks...	<input type="checkbox"/>	Bad results	
Cybia	AlphaWorks...	<input type="checkbox"/>	Bad results	

Filtered plugins: 3

(Error = Bad results) and (Category = Cybia) and ((Name = AlphaWorks...) or (Name = ColourWorks...) or (Name = EdgeWorks...))
 

Customize...

Saving to/Loading from an External File

The Filter Builder dialog allows you to save filter criteria to and load them from an external file. Clicking the Save As... or Open... buttons activates one of these dialogs.

Filter settings are stored in a file with a flt extension. A column in the file is referenced by its position within a view. This means that filter settings cannot be correctly restored if columns were deleted from the view after saving the filter to a file.

